

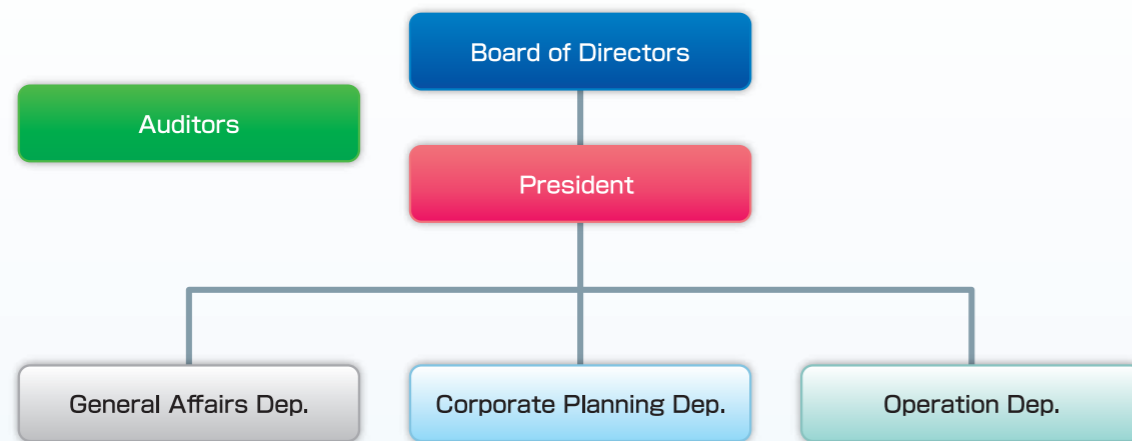
OUR MISSION is to sustain the future of the sewerage system.

Clearwater OSAKA Corporation

Our Focuses are:

- To Ensure Comfortable Living Conditions
- To Contribute to Sewerage Systems Inside and Outside Japan
- To Bring Up Sewerage Experts
- To Take on New Challenges
- To Anticipate and Prepare for the Future

Organizational Structure



Corporate Information

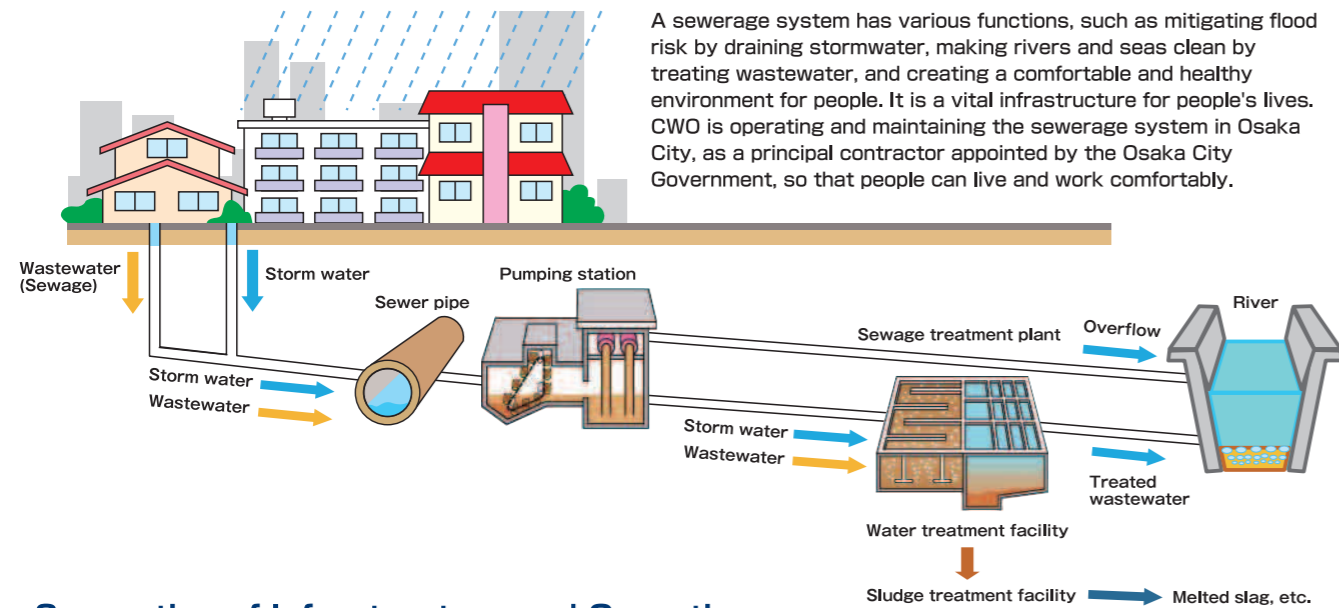
Name	Clearwater OSAKA Corporation
Head Office	2-2-5-233, Semba-chuo, Chuo-ku, Osaka, 541-0055, Japan
Telephone Number	+81-6-6121-6025
URL	https://www.clearwater-osaka.co.jp/
Established	July 1, 2016
President & CEO	Satoshi Fukui
Capital	JPY100 million
Stockholder	Osaka City Government (100%)
Total Employees	Approx. 1,000
Major Business Activities	Operation and maintenance of all sorts of sewerage facilities Planning, designing, and construction management of all sorts of sewerage facilities



CWO Mascot [Sua-kun]

We sustain the future of the sewerage system

1 CWO's Role in a Sewerage System



Separation of Infrastructure and Operation (Comprehensive outsourcing of operation and maintenance)



2 Main Field of Activities (Operation and maintenance of sewerage facilities in Osaka City)

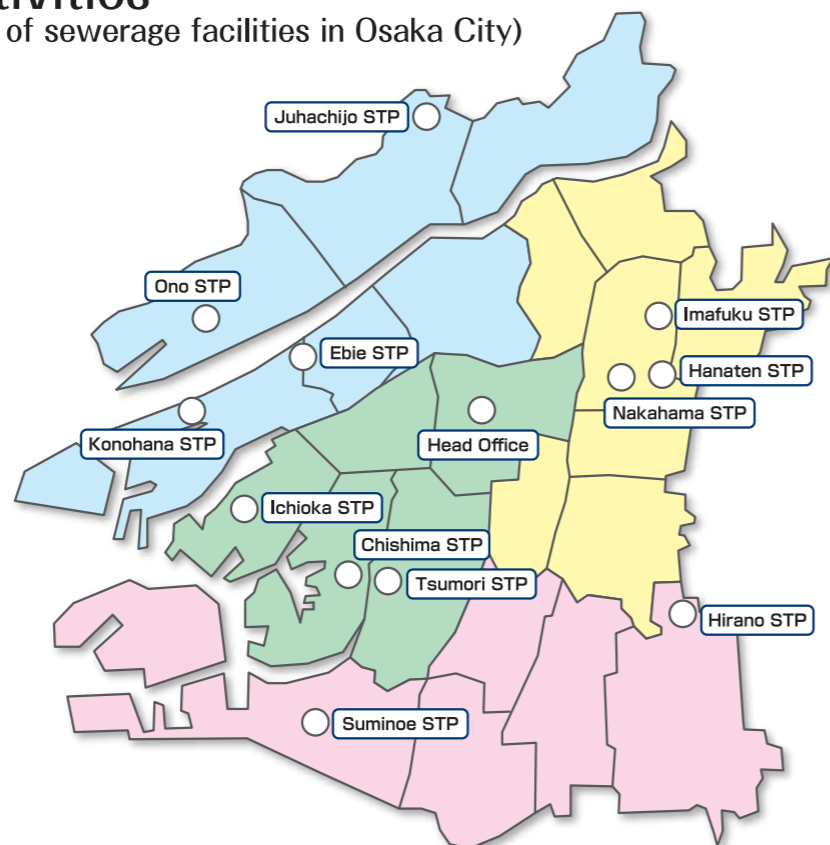
Scope of assignment entrusted by Osaka City

Sewered population	Approx. 2.7 million people
Sewage treatment plants (STPs)	12 plants
Water treatment capacity	Approx. 2.84 million m ³ /day
Pumping stations	58 stations
Total sewer length	Approx. 4,950 km

As of 2016

Organizational structure of CWO

- Head Office (in Semba Center Building)
- Ichioka Office (in Ichioka STP)
- Eastern Sewerage Office (in Nakahama STP)
- Western Sewerage Office (in Tsumori STP)
- Water Quality Analysis Center (in Tsumori STP)
- Southern Sewerage Office (in Suminoe STP)
- Northern Sewerage Office (in Ebie STP)



3 Our Commitments

Providing Reliable Services to Customers

We build satisfaction and trust in our customers by fully carrying out every single duty in all assignments, including the duties under the contract for the comprehensive O & M of sewerage facilities.

Contributing to the development of sewerage systems in Japan and abroad

We support the sewerage system as a whole by exerting our expertise in sewerage fields, such as planning, management, and operation and maintenance. We also support municipalities in constructive ways by customizing services to meet the individual needs and transferring our expertise to the customers.

Developing human resources and a strong corporate culture

We keep improving our capabilities on a long-term basis by fully taking over accumulated expertise and know-how, and further upgrading them, while fostering a productive corporate culture by adapting ourselves to changing needs, all of which are indispensable to a competitive company.

Our Specific Activities (O & M of sewerage facilities, Technical contribution, both domestic and abroad)



Inspecting sewer pipes (with a zoom camera)



Supervising contractors' work



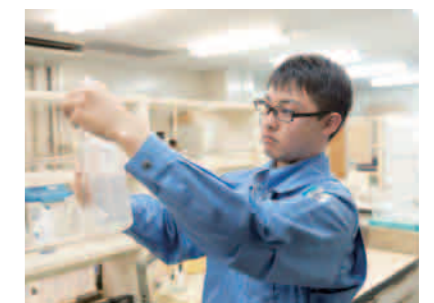
Designing · Ordering



Inspecting facilities



Operating facilities



Analyzing water quality



Accepting trainees from overseas



Raising public awareness (Yangon, Myanmar)



Attending JICA meeting

A Strong Partnership with Japan Sewage Works Agency

CWO is committed to providing various supports to local governments administrating sewerage systems as an equal partner of Japan Sewage Works Agency. (Japan Sewage Works Agency and CWO sealed an agreement on strengthening bilateral cooperation on Oct. 16, 2017.)